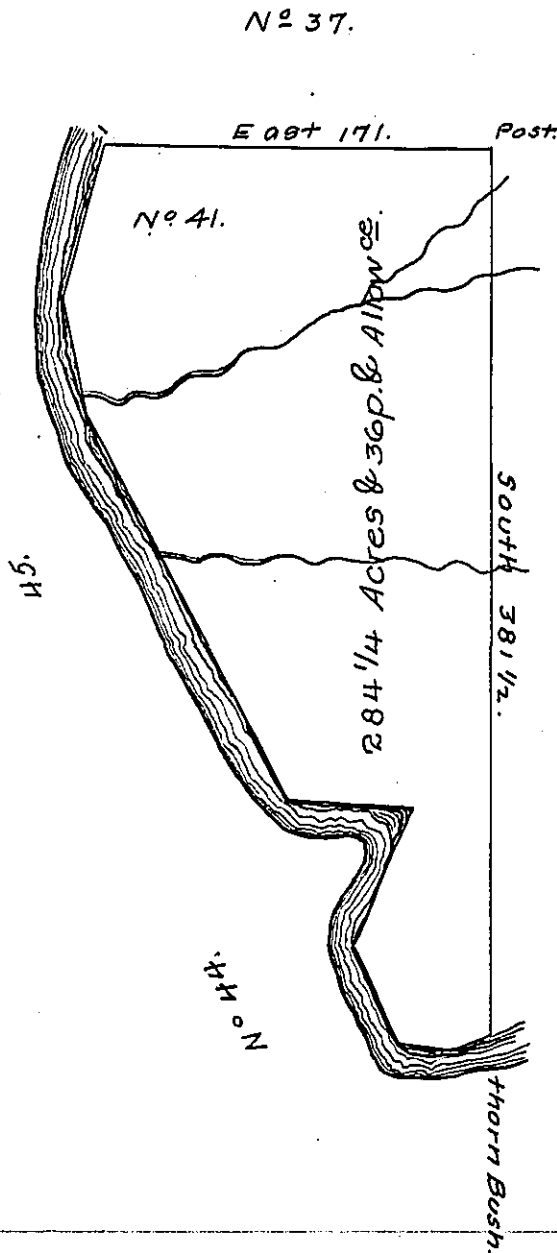


Courses & distances down Connoughqueanneasing Creek.

- Vizt: S. 62° W. 19. ✓
- ✓ N. 82° W. 24.
- ✓ N. 25° W. 45
- ✓ N. 22° E. 67.
- ✓ N. 88° W. 54 1/2
- ✓ N. 29° W. 188.
- ✓ N. 8° W. 49.
- ✓ N. 12° E. 70.

516 1/2.



Major Alexanders part of District No. 3.

Situate on the Northside of Connoughqueanneasing Creek in that Part of District No. 3 to me Allotted on the northside of the River Ohio being Part of the Land Appropriated for the Redemption of the Certificates of depreciation &c. Surveyed in June 1785. Pursuant to Instructions from Jn. Lukens Esqr. Surveyor Gen. dated at Philad. the 5th. day of March 1785.

Nat. Breading, D.S.

IN TESTIMONY that the above is a copy of the original remaining on file in the Department of Internal Affairs of Pennsylvania, made conformably to an Act of Assembly approved the 16th day of February 1833, I have hereunto set my hand and caused the Seal of said Department to be affixed at Harrisburg, this seventh day of May 1907.

Henry Howard
Secretary of Internal Affairs.